

LOCATION OF WORK:	WRITTEN BY:	APPROVED BY:	DATE :	LAST REVISION:
South Point School	L. Carriere	Albert Jubinville	November 16, 2018	New

HAZARDS PRESENT	PERSONAL PROTECTIVE EQUIPMENT (PPE)	ADDITIONAL REQUIREMENTS
<ul style="list-style-type: none"> Chemical burns Splash Inhalation of fumes High pressure water system Excessive noise – hearing damage 	<ul style="list-style-type: none"> Rubber nitrile gloves Face shield Chemical apron Safety glasses Long sleeve clothing Spill kit Safety footwear Hearing protection 	<ul style="list-style-type: none"> WHMIS training Boiler system training 5th Class Power Engineer

SAFE WORK PROCEDURE

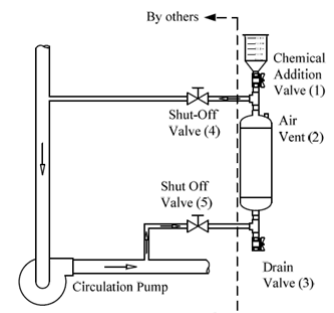
NOTE: THIS PROCEDURE IS ONLY PREFORMED AFTER EXTERNAL TEXTING HAS DETERMINED THAT ADDITIONAL CORRSHIELD IS REQUIRED.

HAZARD: THE SYSTEM IS UNDER HIGH PRESSURE 165-300 PSI. FAILURE TO FOLLOW THE STEPS OULINED BELOW WILL RESULT IN CHEMICAL BURNS TO THE FACE AND UPPER BODY OR PERMANENT EYE DAMMAGE.

PROCEDURE:

1. Don all personal protective equipment including the following: long sleeve shirt, face shield, chemical resistant rubber nitrile gloves, chemical apron, and safety footwear.
2. Assemble all equipment required for this task: drain hose, Corrschild, pail for decanting, spill kit, etc.
3. Shut off the pressure control valves for the circulation pump at both the intake and output pipes.
4. Attach the drain hose to the bottom of the feed pot.
5. Open the drain valve at the bottom of the feed pot.
6. Open the air vent at the top of the feed pot. Note: not all feed pots have an air vent, some will just have a chemical addition valve.
7. Allow the feed pot to empty into the drain hose and into the drain.
8. Close the drain valve.
9. Open the chemical addition valve at the bottom of the funnel, on top of the feed pot.
10. Pour the chemical to the funnel (almost a full 5 gallon pail of Corrschild 4102).

HAZARD: The 5 gallon pail is very heavy when full and therefore may require decanting into a smaller pail for pouring. This adds an additional step where chemical can be spilt or splashed. Chemicals are highly corrosive and can cause severe burns.



11. Close the chemical addition valve and air vent valve (at the top of the feed pot).

HAZARD: Failure to close the air vent during this step will cause Corrshield to be sprayed into the air under high pressure.

12. Open the intake valve (at the bottom of the feed pot on the piping to the right) and then open the output valve (at the top of the feed pot on the piping and to the left) and allow the water to flow through the feed pot and into the circulation system.
13. Allow the water to circulate the chemical for approximately 1 hour.
14. Close both shut off valves and repeat two more times or as many as required.

SPILL CLEAN UP:

1. Notify the divisional safety officer.
2. In the event of a spill or splash onto skin or clothing, immediately run affected area under water for a minimum of 15 minutes. If splashed onto clothing, run under water and remove, continue to wash the affected area for 15 min. Notify your supervisor immediately and seek medical attention.
3. Don all personal protective equipment and obtain the school spill kit.
4. In the event of a spill onto piping/flooring:
 - a) Sprinkle Spill King over the affected area, if on floor. Allow to absorb.
 - b) Use a brush to move the absorbent back and for over the area until it is fully absorbed.
 - c) Sweep up into a Biohazard bag and seal.
 - d) Wash the affected are with clean water.
 - e) Rinse all items used to clean up the spill with water and dry.
5. If any equipment/piping have been sprayed with chemical:
 - a) Use a water saturated wet paper towel to dilute and rinse the affected areas until no chemical remains.
 - b) Dry with paper towels.
 - c) Discard all waste into the biohazard bag.
6. Dispose of waste as hazardous waste and send to the hazardous waste storage at Facilities & Operations.
7. Wipe down chemical apron and face shield with clean water and hang to dry. Rinse chemical resistant gloves with clean water and hand to dry. Wash hands and face with clean water and dry with paper towels.
8. Refill any spill kit items that have been used. Refill items can be obtained from the divisional safety officer.

REGULATORY REQUIREMENTS

- WS&H Act W210, Section 4, 5, 7, 7.1
- Mb. Regulations 217/2006,
 - Part 2, Safe Work Procedures
 - Part 35, WHMIS
 - Part 36, Chemical Biological Substances
- Corrshield 4102 SDS
- AXIOM CBF Series Chemical By-Pass Feeder Operation & Maintenance Instructions.